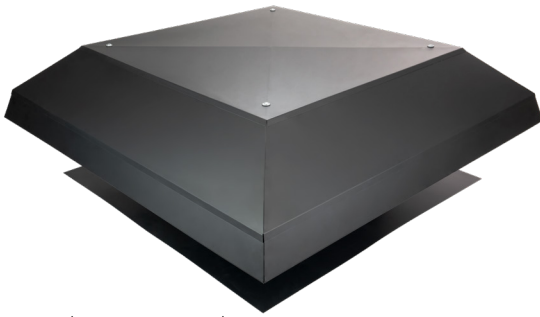




RM WHF-4.0-DG2
QuietCool Roof Mount Whole House Fan

RM WHF-4.0-DG2 Specifications

Airflow	Hi: 3,543 CFM / Med: 3,205 CFM / Low: 2,878 CFM	
HVI-916 Airflow (for CA Title 24 New Construction)*	Hi: 2,730 CFM / Med: 2,390 CFM / Low: 2,100 CFM	
Energy Use	Hi: 377 Watts / Med: 280 Watts / Low: 202 Watts	
Recommended SQFT Coverage @ 2-3 CFM per SQFT	Covers 1,181 SQFT to 1,771 SQFT	
Amps	Hi: 4.97 / Med: 3.69 / Low: 2.72	
Motor Voltage	120VAC, 60 Hz	
# of Speeds	3	
Minimum Attic Clearance	None	
Motor Head Diameter	24.75"	
Dampers	(2) Barometric Pressurized Dampers 14" x 14"	
Controls	IT-36002 QuietCool RF Wireless Control Kit	
Warranty	10 Years	
Framing: Roof Rafter	24" on center	
Framing: Ceiling Joist	16" on center	
Minimum Suggested Attic Venting	None	
Roof Opening	22" circle	
Damper Grille Outer Dimension	(2) 16" x 16"	
Ceiling Rough Opening	(2) 14.25" x 14.25"	
Shipping Package 1: Fan	69 lbs.	
Shipping Package 2: Accessories	16 lbs.	
Box Dimensions: Fan	42" x 20" x 44"	
Box Dimensions: Accessories	34" x 17" x 16"	
In The Box	-RM WHF-4.0 Fan -(2) Damper Ceiling Grille -RF Wireless Control Kit	-Accessory Bag -Cut-out Template



* Varies on application of the home. These numbers are estimated.

For more information, visit our website at:
QUIETCOOLSYSTEMS.COM