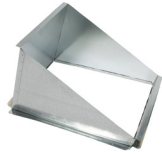


QuietCool Vertical Adapter Specifications

QuietCool Vertical Adapters



14" x 14" Part Number: VA-1414

| | |
|---------------------|--|
| Dimensions | H:10" x W:14.5" x L:14.25" |
| Weight | 2.5 lbs. |
| Shipping Dimensions | L:16" x W:11" x H:4" |
| Shipping Weight | 4 lbs. |
| Fits | QC CL-1500, QC ES-1500, STL PRO-1.5X, TRI PRO-1.5X |



14" x 18" Part Number: VA-1418

| | |
|---------------------|--|
| Dimensions | H:12" x W:14.5" x L:18.25" |
| Weight | 3 lbs. |
| Shipping Dimensions | L:18" x W:13" x H:4" |
| Shipping Weight | 4 lbs. |
| Fits | QC CL-2250, QC ES-2250, STL PRO-2.5X, TRI PRO-2.5X |



14" x 22" Part Number: VA-1422

| | |
|---------------------|--|
| Dimensions | H:14" x W:14.5" x L:22.25" |
| Weight | 4 lbs. |
| Shipping Dimensions | L:22" x W:15" x H:4" |
| Shipping Weight | 5 lbs. |
| Fits | QC CL-3100, QC ES-3100, STL PRO-3.3X, TRI PRO-3.3X |



14" x 30" Part Number: VA-1430

| | |
|---------------------|--|
| Dimensions | H:18" x W:14.5" x L:30.25" |
| Weight | 5 lbs. |
| Shipping Dimensions | L:29" x W:19" x H:4" |
| Shipping Weight | 8 lbs. |
| Fits | QC CL-4700, QC ES-4700, STL PRO-4.8X, TRI PRO-4.8X QC CL-5400, QC ES-5400, STL PRO-5.5X, TRI PRO-5.5X |



14" x 36" Part Number: VA-1436

| | |
|---------------------|--|
| Dimensions | H:18" x W:14.5" x L:36.5" |
| Weight | 6.5 lbs. |
| Shipping Dimensions | L:35" x W:19" x H:4" |
| Shipping Weight | 9 lbs. |
| Fits | QC CL-6000, QC ES-6000, STL PRO-6.0X, TRI PRO-6.0X QC CL-7000, QC ES-7000, STL PRO-7.0X, TRI PRO-7.0X |

| | |
|--------------|--|
| Material | Galvanized Steel |
| Color Finish | Silver |
| Framing | Fits 16" or 24" on center No Framing or Joist Cutting |
| Warranty | 1 Years |